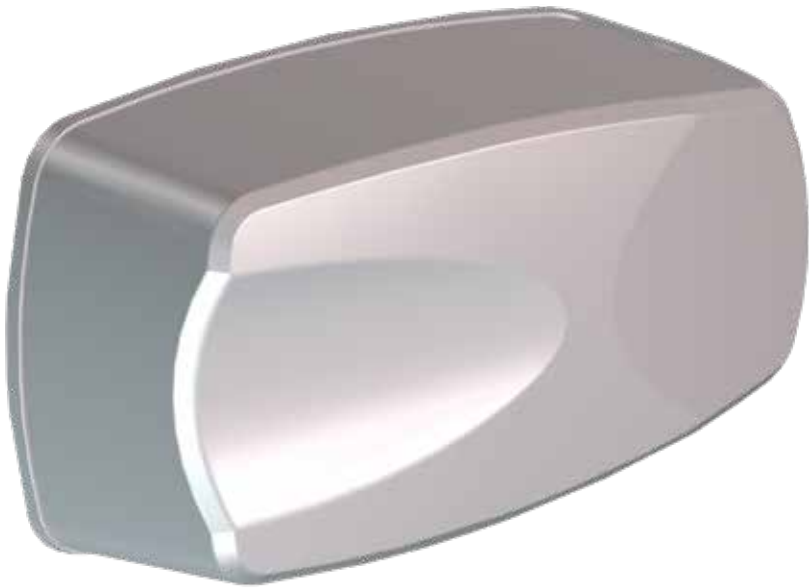


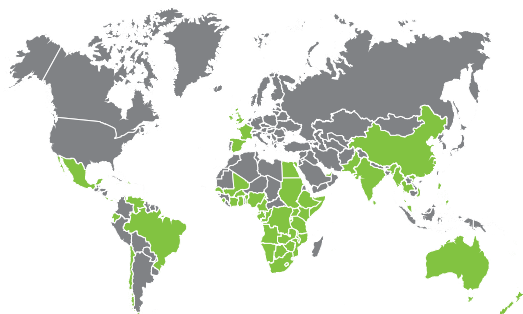
SECTOR II RECTANGULAR BOOM POLE SHROUD INSTALLATION MANUAL



Today

After-sales multi-language Technical Support

100%
testing of
products



Call Centre Operating Times

Saturdays
08h00 to 14h00 GMT+2

Centurion Systems (Pty) Ltd reserves the right to make changes to the product described in this manual without notice and without obligation to notify any persons of any such revisions or changes. Additionally, **Centurion Systems (Pty) Ltd** makes no representations or warranties with respect to this manual. No part of this document may be copied, stored in a retrieval system or transmitted in any form or by any means electronic, mechanical, optical or photographic, without the express prior written consent of **Centurion Systems (Pty) Ltd**.



Contents

1.	INTRODUCTION	Page 4
2.	PRODUCT IDENTIFICATION	Page 6
2.1.	External components	Page 6
2.2.	Hardware unpacking	Page 7
3.	PHYSICAL INSTALLATION	Page 8
3.1.	Fitting the Shroud frame	Page 8
3.1.1.	Rectangular coupler	Page 8
3.1.2.	Rectangular breakaway coupler	Page 9
3.2.	Fitting the Shroud	Page 10
4.	INSTALLATION HANDOVER	Page 11

Icons used in this manual



This icon indicates tips and other information that could be useful during the installation.



This icon denotes variations and other aspects that should be considered during installation.



This icon indicates warning, caution or attention! Please take special note of critical aspects that **MUST be adhered to in order to prevent injury.**

1. Introduction



ATTENTION!

To ensure the safety of people and possessions, it is important that you read all of the following instructions.

Incorrect installation or incorrect use of the product could cause serious harm to people.

The installer, being either professional or DIY, is the last person on the site who can ensure that the operator is safely installed and that the whole system can be operated safely.

Warnings for the Installer

CAREFULLY READ AND FOLLOW ALL INSTRUCTIONS before installing the product.

- All installation, repair, and service work to this product must be carried out by a suitably qualified person
- Do not activate your barrier unless you can see it and can determine that its area of travel is clear of people, pets, or other obstructions
- **NO ONE MAY CROSS THE PATH OF A MOVING BARRIER.** Always keep people and objects away from the barrier and its area of travel
- **NEVER LET CHILDREN OPERATE OR PLAY WITH THE BARRIER CONTROLS**
- Secure all easily-accessed barrier controls in order to prevent unauthorised use of the barrier
- Do not in any way modify the components of the automated system
- Do not install the equipment in an explosive atmosphere: the presence of flammable gasses or fumes is a serious danger to safety
- Before attempting any work on the system, cut electrical power to the operator and disconnect the batteries
- The mains power supply of the automated system must be fitted with an all-pole switch with contact opening distance of 3mm or greater. Use of a 5A thermal breaker with all-pole circuit break is recommended
- Make sure that an earth leakage circuit breaker with a threshold of 30mA is fitted upstream of the system
- Never short-circuit the battery and do not try to recharge the batteries with power supply units other than that supplied with the product, or manufactured by Centurion Systems (Pty) Ltd
- Make sure that the earthing system is correctly constructed, and that all metal parts of the system are suitably earthed

- Safety devices must be fitted to the installation to guard against mechanical movement risks, such as crushing, dragging and shearing
- It is recommended that at least one warning indicator light be fitted to every system
- Always fit the warning signs visibly to the inside and outside of the barrier
- The installer must explain and demonstrate the manual operation of the barrier in case of an emergency, and must hand over the user guide to the user
- Explain these safety instructions to all persons authorised to use this barrier, and be sure that they understand the hazards associated with traffic barriers
- Do not leave packing materials (plastic, polystyrene, etc.) within reach of children as such materials are potential sources of danger
- Dispose of all waste products like packing materials, worn-out batteries, etc. according to local regulations
- Always check the obstruction detection system and safety devices for correct operation
- Neither Centurion Systems (Pty) Ltd, nor its subsidiaries, accepts any liability caused by improper use of the product, or for use other than that for which the automated system was intended
- This product was designed and built strictly for the use indicated in this documentation. Any other use, not expressly indicated here, could compromise the service life/operation of the product and/or be a source of danger
- Anything that has not been specified in these instructions may be considered a risk to your safety, and the safety of others. If you are unsure of an installation matter, please contact your nearest distributor



2. Product Identification

2.1. External components

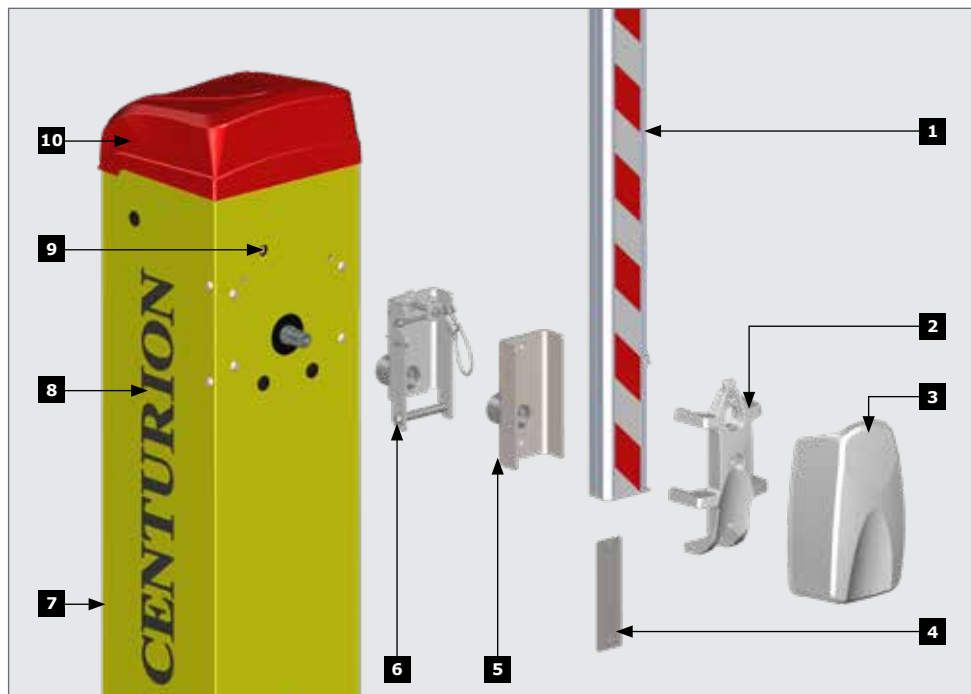


FIGURE 1. PRODUCT IDENTIFICATION - EXTERNAL COMPONENTS

- | | |
|--|------------------------------------|
| 1. Rectangular Boom pole
(3m, 4.5m and 6m) (not supplied) | 6. Rectangular breakaway coupler |
| 2. Boom pole Shroud frame | 7. Door |
| 3. Boom pole Shroud | 8. Barrier enclosure |
| 4. Rectangular Boom pole retainer | 9. Manual override (6mm Allen key) |
| 5. Rectangular coupler | 10. Barrier lid |

2.2. Hardware unpacking

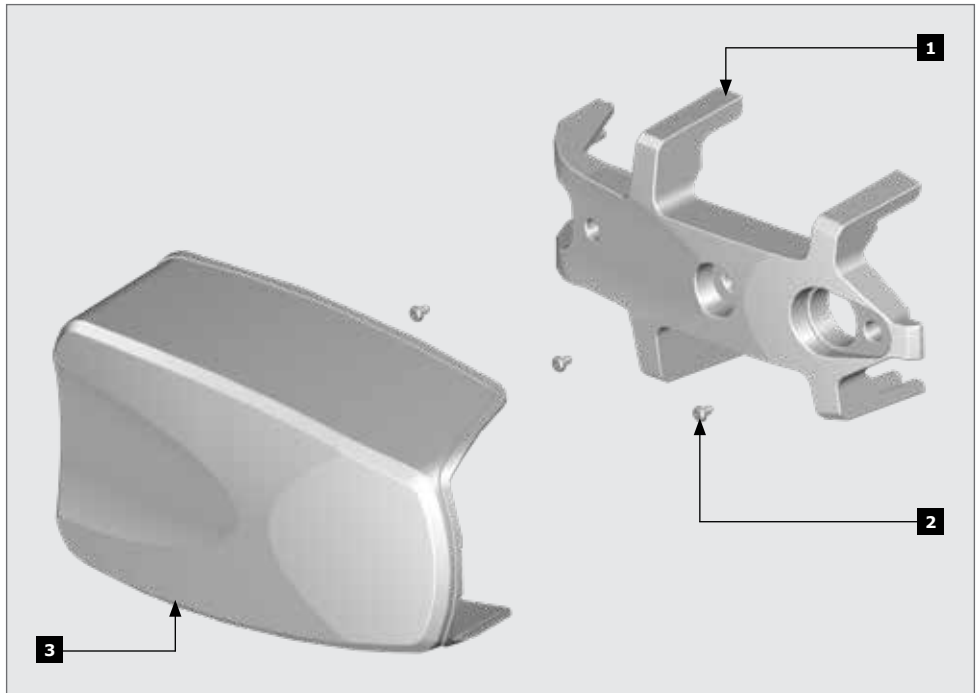


FIGURE 2. PRODUCT IDENTIFICATION - HARDWARE

- 1. **Shroud** frame
- 2. Self tapping Screw

- 3. **Shroud**

3. Physical Installation

3.1. Fitting the Shroud frame



The following steps should only be performed once the rectangular boom pole has been successfully fitted onto the SECTOR II .

3.1.1. Rectangular coupler

1. Place the **Shroud** frame flat on the rectangular boom pole and align it with the end cap.
2. Mark and centre punch the hole positions for drilling.



Keep note of orientation.
The **Shroud** frame must be facing the direction of traffic and the plastic bumper must be facing downwards.

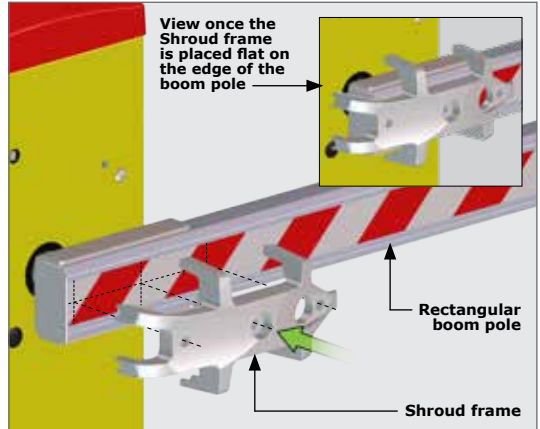


FIGURE 3

3. Drill three 3.5mm holes.



Holes must be drilled through only one wall of the boom pole.

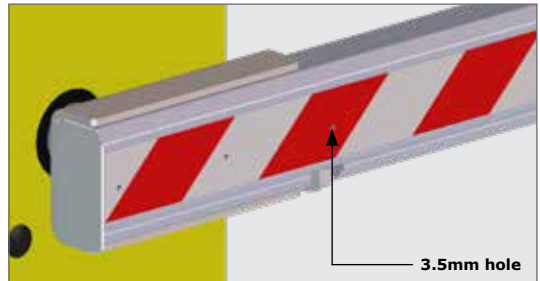


FIGURE 4

4. Fasten the **Shroud** frame to the Boom pole using the self-tapping screws.

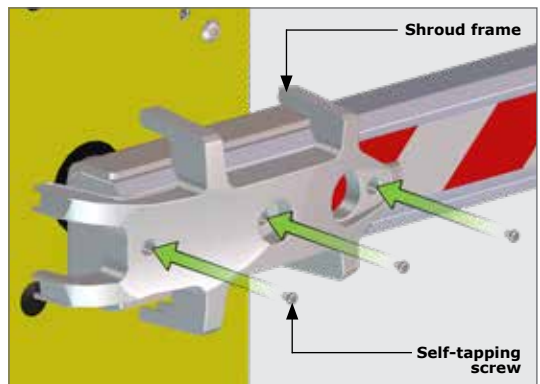


FIGURE 5

3.1.2. Rectangular breakaway coupler

1. Place the **Shroud** frame flat on the rectangular boom pole and align it with the end cap.
2. Mark and centre punch the hole positions for drilling.



Keep note of orientation. The **Shroud** frame must be facing the direction of traffic and the plastic bumper must be facing downwards.

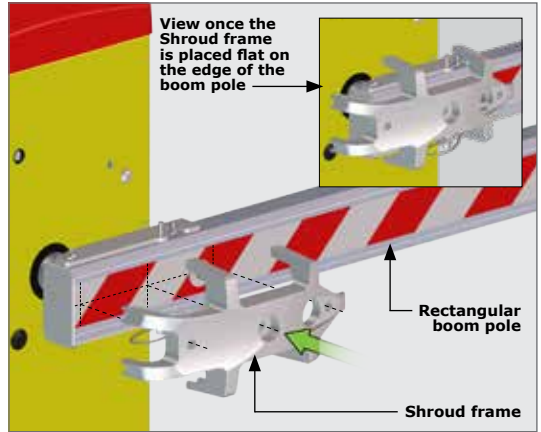


FIGURE 6

3. Drill three 3.5mm holes.



Holes must be drilled through only one wall of the boom pole.

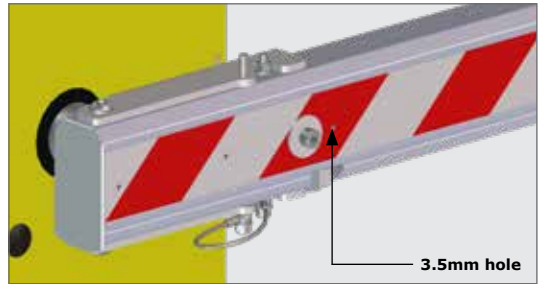


FIGURE 7

4. Fasten the **Shroud** frame to the Boom pole using the self tapping screws.

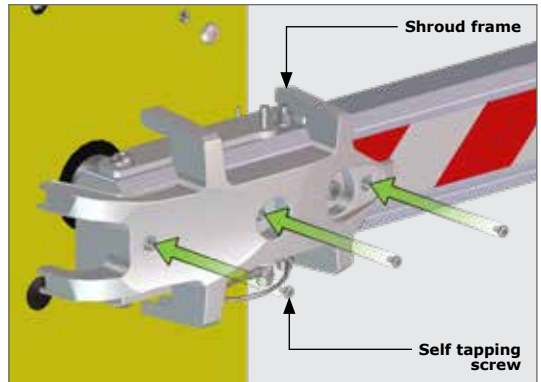


FIGURE 8

3.2. Fitting the Shroud

1. Hook the front end of the **Shroud** onto the **Shroud frame** and then rotate it to clip in the back end.



Step 1 also applies for the boom pole with the rectangular breakaway coupler.

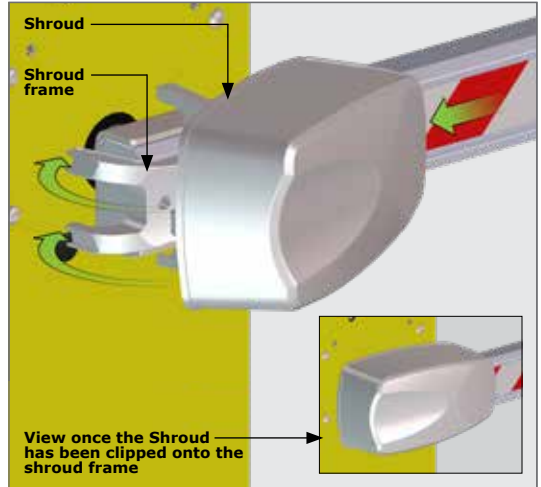


FIGURE 9



If LEDs are fitted to the boom pole, the boom pole harness should be tucked inside the **Shroud**. It should also be confined in such a way that the cable is not pinched by the **Shroud**.

4. Installation Handover

Once the **SECTOR II Shroud** has been successfully installed and its operation tested, it is important for the operation and safety considerations to be explained to the end-user of the system.



Connect with us on:

 **facebook.com/centurionsystems**

 **YouTube.com/centurionsystems**

 **@askcenturion**

 **centurion.systems**

Subscribe to the newsletter: www.centsys.com/subscribe

**Call Centurion Systems (Pty) Ltd • South Africa
Head Office: +27 11 699 2400**

**Call Technical Support: +27 11 699 2481
Monday to Friday: from 08h00 to 17h00 (GMT+2)
Saturday: from 08h00 to 14h00 (GMT+2)**

E&OE Centurion Systems (Pty) Ltd reserves the right to change any product without prior notice

All product and brand names in this document that are accompanied by the ® symbol are registered trademarks in South Africa and/or other countries, in favour of Centurion Systems (Pty) Ltd, South Africa.

The CENTURION and CENTSYS logos, all product and brand names in this document that are accompanied by the TM symbol are trademarks of Centurion Systems (Pty) Ltd, in South Africa and other territories; all rights are reserved.

We invite you to contact us for further details.



Doc number: 1246.D.01.0016_21022023

www.centsys.com